



credo

CENTER FOR RESEARCH ON EDUCATION OUTCOMES

City Study 2019: Washington DC

Acknowledgements

- Student-level data were provided by the Office of the State Superintendent of Education (OSSE).
- Education Forward DC assisted CREDO with verifying the list of magnet schools and schools affiliated with charter management organizations and/or education management organizations within the city.

This Report

- This report on *Washington DC* is one in a series of studies examining school performance across selected U.S. cities.
- Performance is defined as how much academic growth students made from one year to the next.
- The performance of students in Washington DC is benchmarked to the city average, accounting for student characteristics.
- We first track the growth of Washington DC by sector using data from 2013-14 to 2016-17.
- We then further explore how one-year academic growth for the period ending in Spring 2017 differs by sector, school type, race, poverty status (eligibility for free or reduced-price lunch), English language learner (ELL) status, special education status, and gender.

Types of Charters

- **CMO: Charter Management Organizations**
 - To qualify as a CMO, an organization must oversee the operation of at least three charter schools. Further, the CMO must be the charter holder for all of the schools operated by the CMO.
- **EMO: Education Management Organizations**
 - To qualify as an EMO, an organization must provide services under contract to at least three separate charter schools, but does not hold the charter for any school they serve. The EMO must answer to the school's charter holder in addition to authorizers and OSSE.
- **Independent Charter Schools**
 - To qualify as an independent charter school, an organization must oversee the operation of a single charter school. The charter-holding organization may run the school directly or they may contract with an organization which provides services to one or two charter schools.

Presentation of Results

- The results display two sets of comparisons
 - The progress of Washington DC students in each sector is **benchmarked against the city average learning gains, accounting for student characteristics.**
 - Positive numbers represent better than average performance.
 - Negative numbers represent worse than average performance.
 - Significance in the difference between students in each sector of the city and the average city performance is represented by black asterisks.
 - The progress of charter school students within Washington DC is then **compared to the performance of similar TPS students within Washington DC.**
 - Significance in the difference between a student group in charter schools and the same student group in TPS is represented by colored asterisks.

Measurement of Academic Growth

- Results are graphically displayed on two axes:
 - The left axis indicates learning gains of Washington DC students in each sector relative to the average learning gains of students with similar characteristics in the city, measured in **standard deviation units**.
 - The right axis displays the same learning gains measured in **days of learning**.
 - The baseline of 0.00 represents 180 days of learning.
 - Positive performance translates to more days of learning.
 - Negative performance represents fewer days of learning.
- The table below shows a transformation of standard deviation units to days of learning.

Standard Deviations	Days of Learning
0.05	30
0.10	59
0.15	89
0.20	118
0.25	148
0.30	177
0.35	207

Roadmap for Graphs

This menu includes links to specific analyses throughout the report.
In the following slides, the same menu is shown on the right-hand side.

Breakout by

Further Breakout by

[Sector](#)

- [Charter Network](#)
- [School-Level](#)

Comparison of Peers

[Race](#)

- [Black Students](#)
- [Hispanic Students](#)

[Subgroup](#)

- [Poverty Status](#)
- [English Language Learner Status](#)
- [Special Education Status](#)

[Gender](#)

- [Female Students](#)
- [Male Students](#)

Sector Analysis

Click the buttons below for reading and math growth of Washington DC schools relative to the city average learning gains by year and sector.

[Sector Analysis](#)
[\(Reading\)](#)

[Sector Analysis](#)
[\(Math\)](#)

[Roadmap](#)
[for Graphs](#)

[Sector Analysis](#)

- [Charter Network](#)
- [School-Level](#)

[Race Analysis](#)

- [Black Students](#)
- [Hispanic Students](#)

[Subgroup Analysis](#)

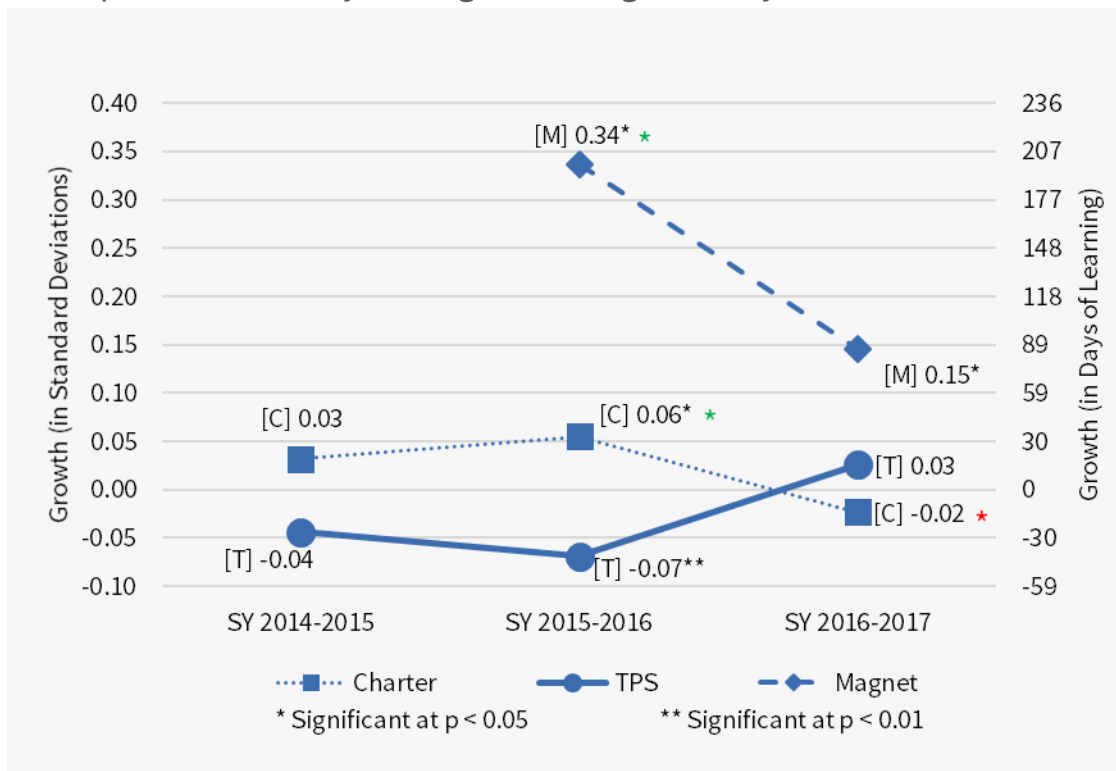
- [Poverty Status](#)
- [ELL Status](#)
- [Special Ed. Status](#)

[Gender Analysis](#)

- [Female Students](#)
- [Male Students](#)

Sector Analysis: Reading

Learning Gains in Reading for Students in Washington DC Charter Schools, Washington DC Magnet Schools and Washington DC TPS Compared to the City Average Learning Gains by Year



* Growth significantly stronger than that of TPS

* Growth significantly weaker than that of TPS

The 0.00 line represents the average learning gains of the entire city.
These results capture one-year academic growth for the period ending in the Spring of each school year (SY).

[Roadmap for Graphs](#)

[Sector Analysis](#)

- [Charter Network](#)
- [School-Level](#)

[Race Analysis](#)

- [Black Students](#)
- [Hispanic Students](#)

[Subgroup Analysis](#)

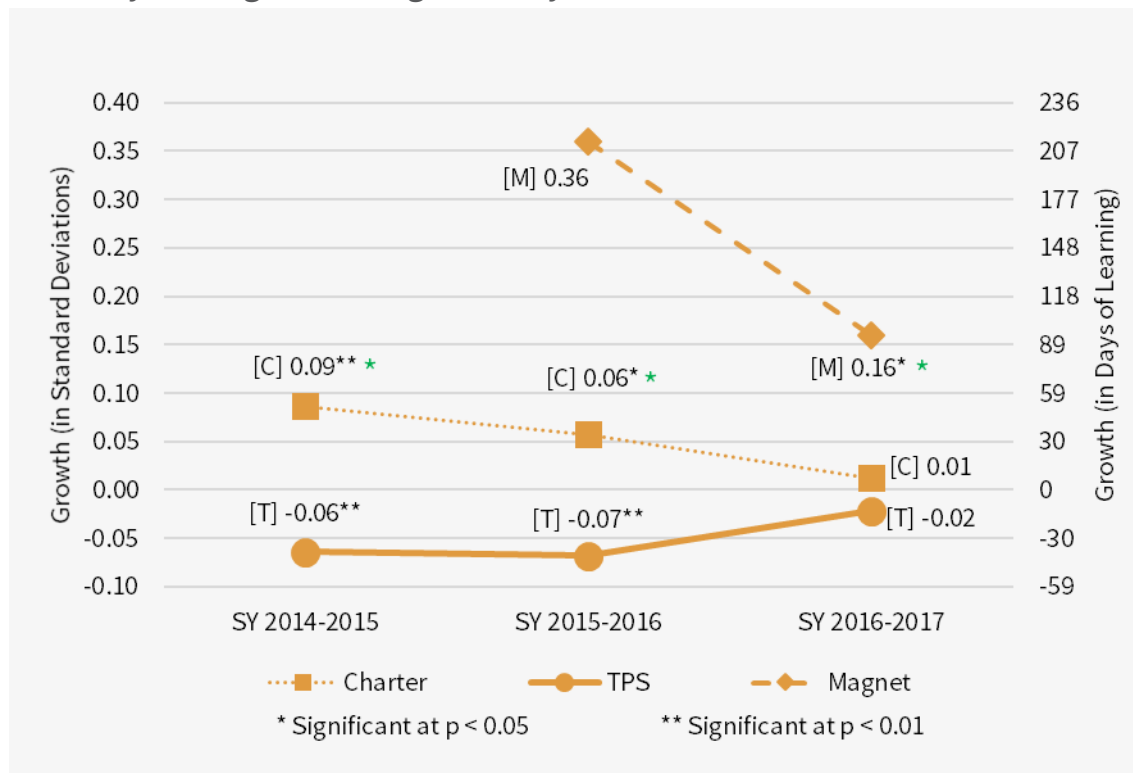
- [Poverty Status](#)
- [ELL Status](#)
- [Special Ed. Status](#)

[Gender Analysis](#)

- [Female Students](#)
- [Male Students](#)

Sector Analysis: Math

Learning Gains in Math for Students in Washington DC Charter Schools, Washington DC Magnet Schools and Washington DC TPS Compared to the City Average Learning Gains by Year



* Growth significantly stronger than that of TPS

* Growth significantly weaker than that of TPS

The 0.00 line represents the average learning gains of the entire city.

These results capture one-year academic growth for the period ending in the Spring of each school year (SY).

[Roadmap for Graphs](#)

[Sector Analysis](#)

- [Charter Network](#)
- [School-Level](#)

[Race Analysis](#)

- [Black Students](#)
- [Hispanic Students](#)

[Subgroup Analysis](#)

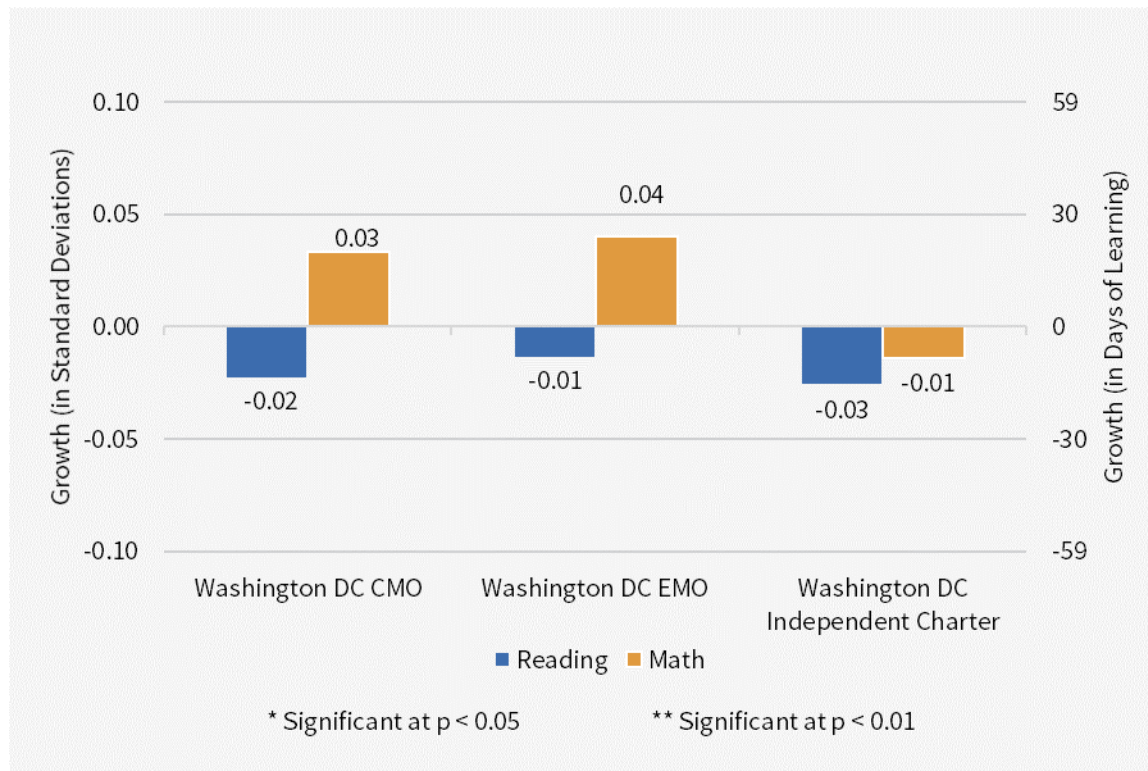
- [Poverty Status](#)
- [ELL Status](#)
- [Special Ed. Status](#)

[Gender Analysis](#)

- [Female Students](#)
- [Male Students](#)

Charter Network Analysis

Learning Gains for Students in Washington DC Network-Affiliated Charter Schools and Independent Washington DC Charter Schools Compared to the City Average Learning Gains, by Subject



The 0.00 line represents the average learning gains of the entire city.
These results capture one-year academic growth for the period ending in Spring 2017.

[Roadmap
for Graphs](#)

[Sector Analysis](#)

- [Charter Network](#)
- [School-Level](#)

[Race Analysis](#)

- [Black Students](#)
- [Hispanic Students](#)

[Subgroup Analysis](#)

- [Poverty Status](#)
- [ELL Status](#)
- [Special Ed. Status](#)

[Gender Analysis](#)

- [Female Students](#)
- [Male Students](#)

School-Level Performance by Sector

Click the buttons below for reading and math growth of individual Washington DC schools relative to the city average by sector. The top cluster of dots shows where individual charter schools lie on spectrum of growth and the bottom cluster shows that of individual TPS.

School Growth
(Reading)

School Growth
(Math)

[Roadmap
for Graphs](#)

[Sector Analysis](#)

- [Charter Network](#)
- [School-Level](#)

[Race Analysis](#)

- [Black Students](#)
- [Hispanic Students](#)

[Subgroup Analysis](#)

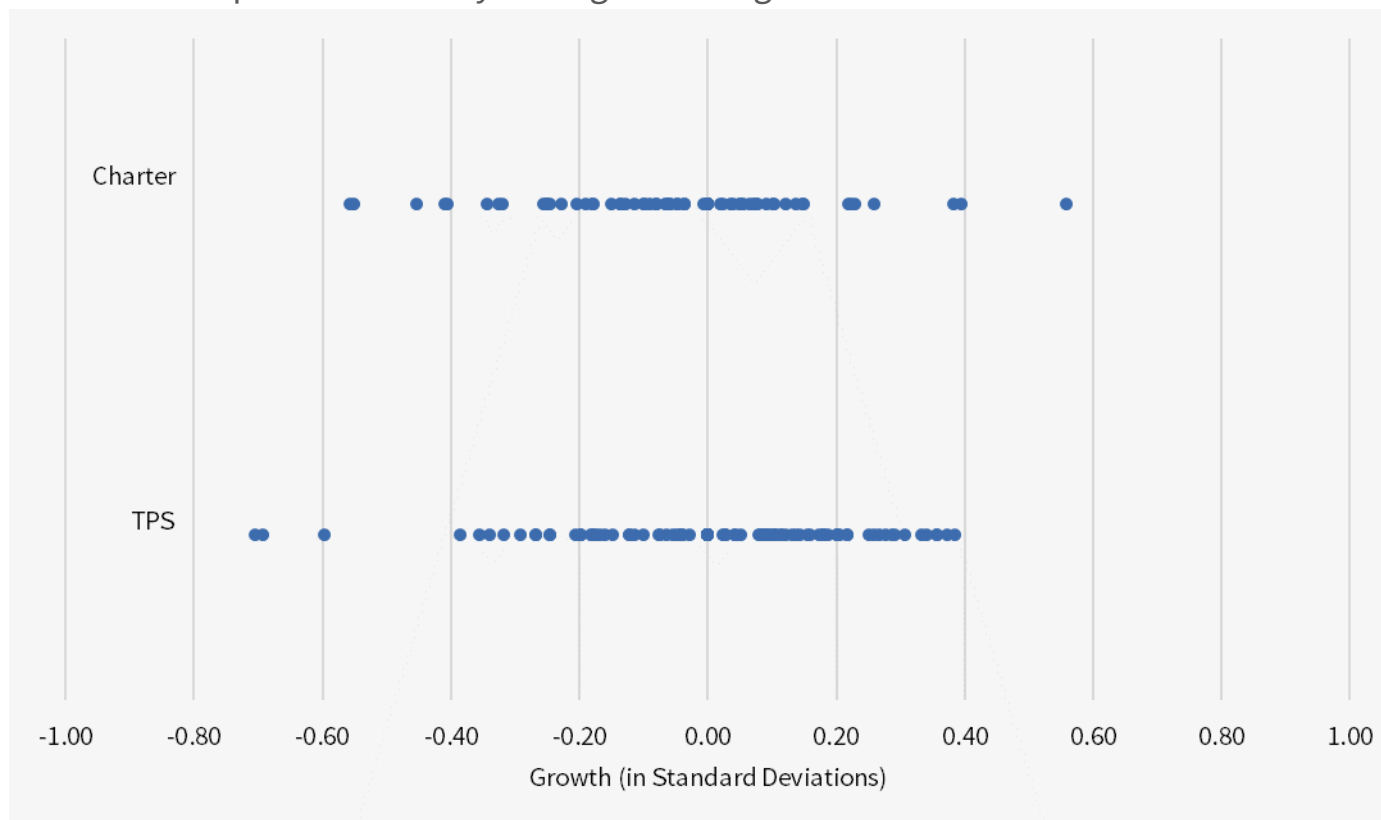
- [Poverty Status](#)
- [ELL Status](#)
- [Special Ed. Status](#)

[Gender Analysis](#)

- [Female Students](#)
- [Male Students](#)

School Growth by Sector - Reading

Distribution of Reading Learning Gains of Individual Washington DC Schools Compared to the City Average Learning Gains



The 0.00 line represents the average learning gains of the entire city.

These results capture one-year academic growth for the period ending in Spring 2017.

[Roadmap
for Graphs](#)

[Sector Analysis](#)

- [Charter Network](#)
- [School-Level](#)

[Race Analysis](#)

- [Black Students](#)
- [Hispanic Students](#)

[Subgroup Analysis](#)

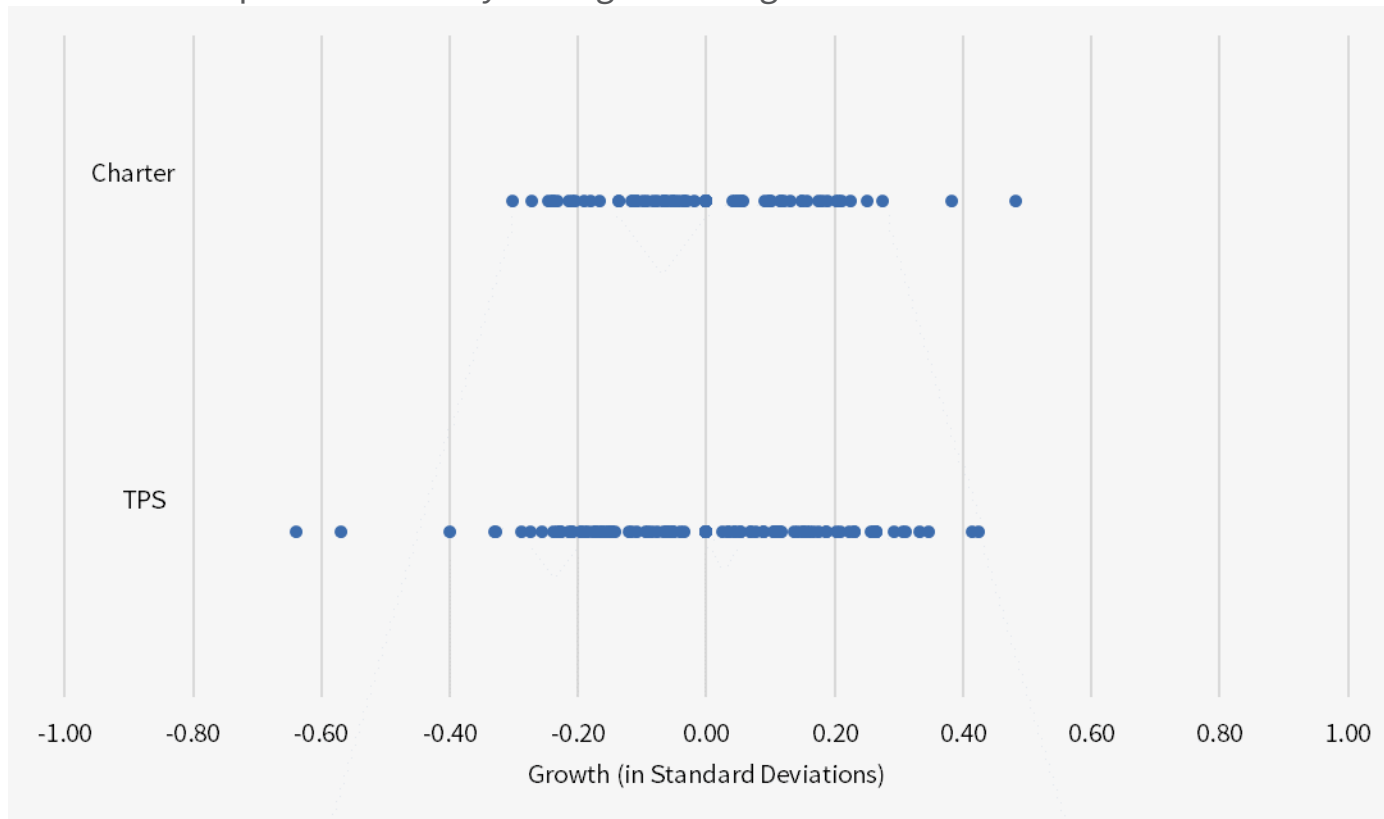
- [Poverty Status](#)
- [ELL Status](#)
- [Special Ed. Status](#)

[Gender Analysis](#)

- [Female Students](#)
- [Male Students](#)

School Growth by Sector - Math

Distribution of Math Learning Gains of Individual Washington DC Schools Compared to the City Average Learning Gains



The 0.00 line represents the average learning gains of the entire city.
These results capture one-year academic growth for the period ending in Spring 2017.

[Roadmap
for Graphs](#)

[Sector Analysis](#)

- [Charter Network](#)
- [School-Level](#)

[Race Analysis](#)

- [Black Students](#)
- [Hispanic Students](#)

[Subgroup Analysis](#)

- [Poverty Status](#)
- [ELL Status](#)
- [Special Ed. Status](#)

[Gender Analysis](#)

- [Female Students](#)
- [Male Students](#)

Race Analysis

Click the buttons below for graphs showing the performance of Black students in Washington DC or Hispanic students in Washington DC in each sector relative to the citywide average learning gains for students of the same race.

[Black
Students](#)

[Hispanic
Students](#)

[Roadmap
for Graphs](#)

[Sector Analysis](#)

- [Charter Network](#)
- [School-Level](#)

[Race Analysis](#)

- [Black Students](#)
- [Hispanic Students](#)

[Subgroup Analysis](#)

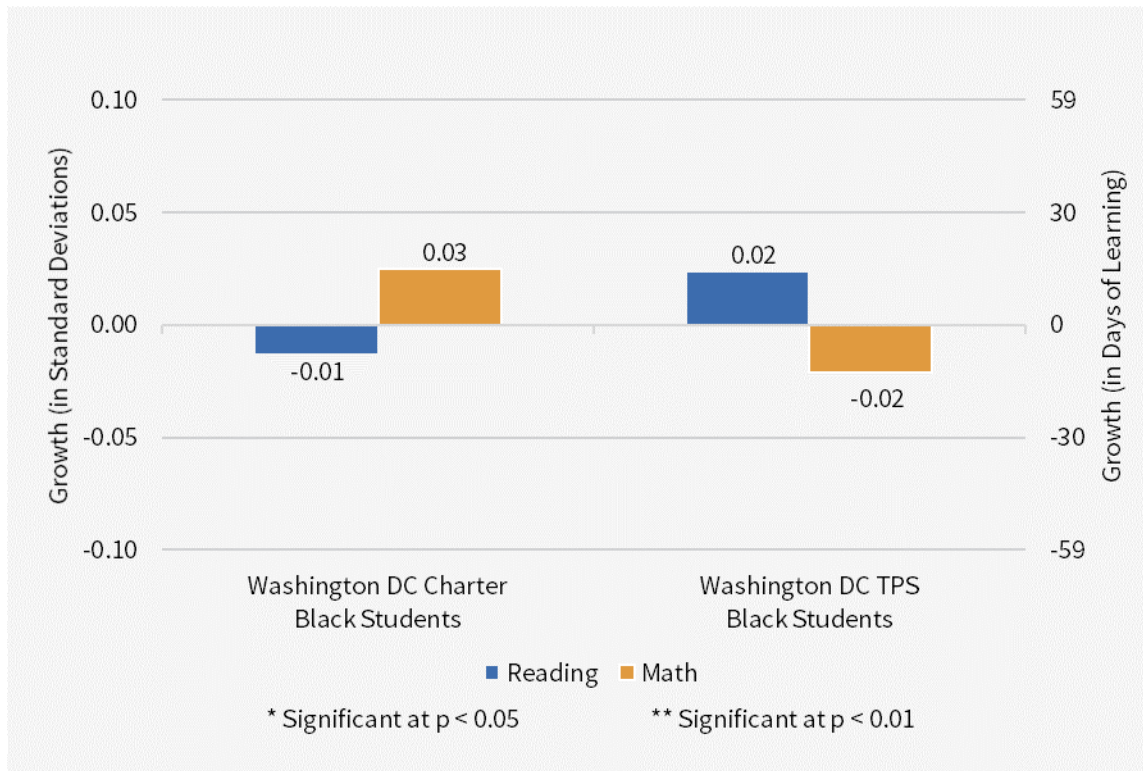
- [Poverty Status](#)
- [ELL Status](#)
- [Special Ed. Status](#)

[Gender Analysis](#)

- [Female Students](#)
- [Male Students](#)

Race Analysis: Black Students by Sector

Learning Gains for Black Charter School Students and Black TPS Students in Washington DC Compared to the Average Learning Gains of Black Students Citywide, by Subject



* Growth significantly stronger than that of TPS

* Growth significantly weaker than that of TPS

The 0.00 line represents the average learning gains of Black students in the entire city. These results capture one-year academic growth for the period ending in Spring 2017.

[Roadmap
for Graphs](#)

[Sector Analysis](#)

- [Charter Network](#)
- [School-Level](#)

[Race Analysis](#)

- [Black Students](#)
- [Hispanic Students](#)

[Subgroup Analysis](#)

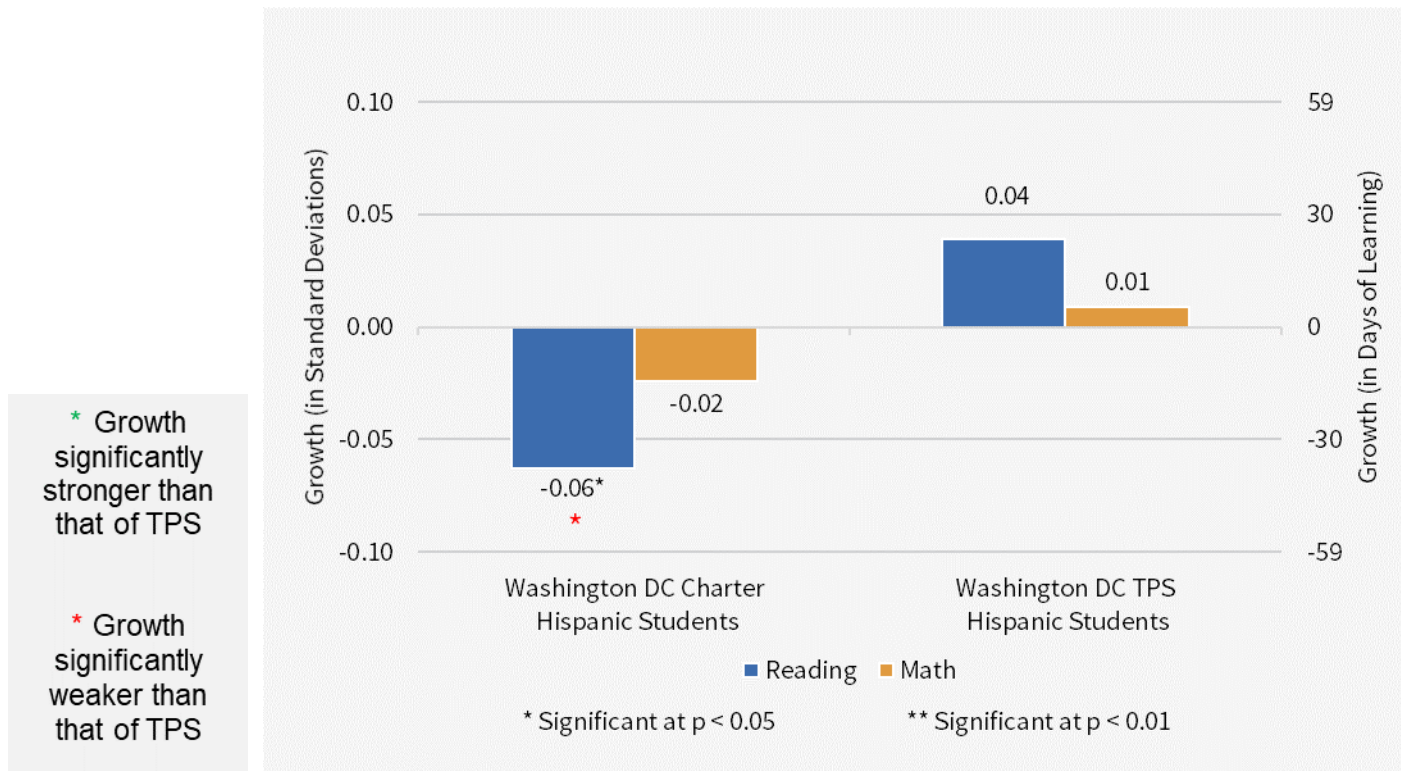
- [Poverty Status](#)
- [ELL Status](#)
- [Special Ed. Status](#)

[Gender Analysis](#)

- [Female Students](#)
- [Male Students](#)

Race Analysis: Hispanic Students by Sector

Learning Gains for Hispanic Charter School Students and Hispanic TPS Students in Washington DC Compared to the Average Learning Gains of Hispanic Students Citywide, by Subject



The 0.00 line represents the average learning gains of Hispanic students in the entire city. These results capture one-year academic growth for the period ending in Spring 2017.

[Roadmap
for Graphs](#)

[Sector Analysis](#)

- [Charter Network](#)
- [School-Level](#)

[Race Analysis](#)

- [Black Students](#)
- [Hispanic Students](#)

[Subgroup Analysis](#)

- [Poverty Status](#)
- [ELL Status](#)
- [Special Ed. Status](#)

[Gender Analysis](#)

- [Female Students](#)
- [Male Students](#)

Subgroup Analyses

Click the buttons below for graphs showing the performance of Washington DC students in poverty, Washington DC students with English Language Learner designation, or Washington DC students receiving special education services in each sector relative to average learning gains of students of the same subgroup citywide.

[Poverty Status](#)

[English
Language
Learner \(ELL\)
Status](#)

[Special
Education Status](#)

[Roadmap
for Graphs](#)

[Sector Analysis](#)

- [Charter Network](#)
- [School-Level](#)

[Race Analysis](#)

- [Black Students](#)
- [Hispanic Students](#)

[Subgroup Analysis](#)

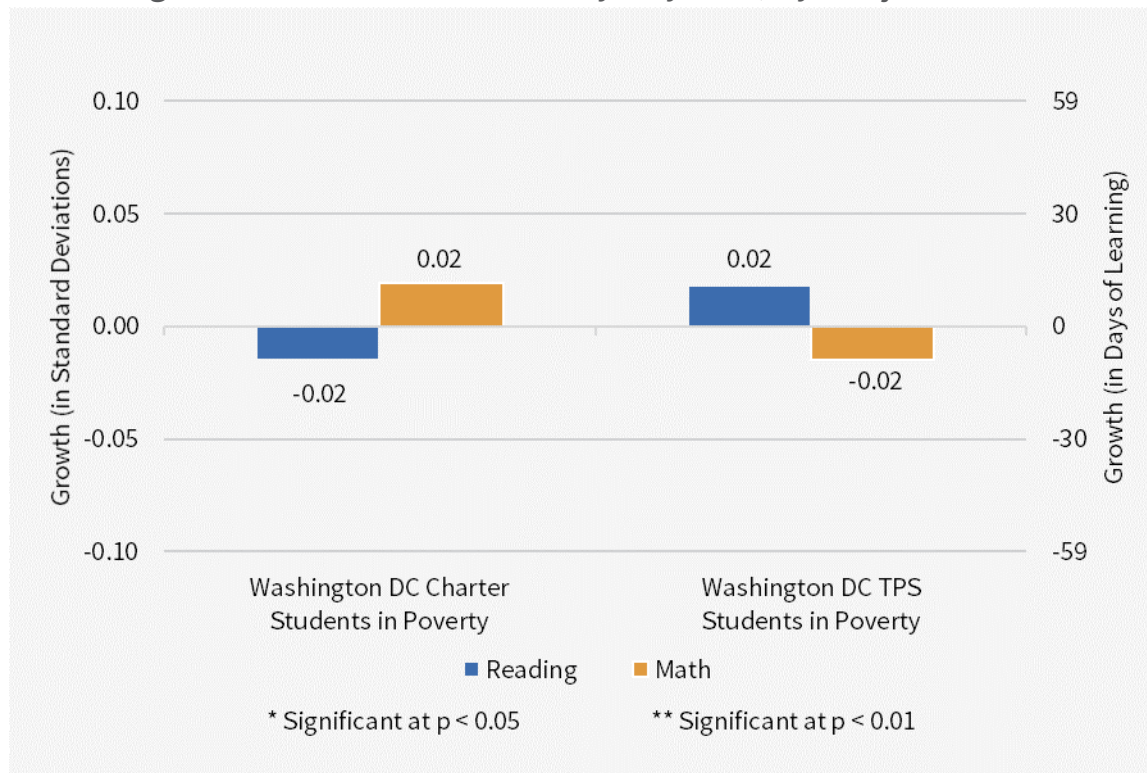
- [Poverty Status](#)
- [ELL Status](#)
- [Special Ed. Status](#)

[Gender Analysis](#)

- [Female Students](#)
- [Male Students](#)

Subgroup Analyses: Poverty Status by Sector

Learning Gains for Washington DC Charter School Students in Poverty and Washington DC TPS Students in Poverty Compared to the Average Learning Gains of Students in Poverty Citywide, by Subject



* Growth significantly stronger than that of TPS

* Growth significantly weaker than that of TPS

The 0.00 line represents the average learning gains of students in poverty in the entire city. These results capture one-year academic growth for the period ending in Spring 2017.

[Roadmap
for Graphs](#)

[Sector Analysis](#)

- [Charter Network](#)
- [School-Level](#)

[Race Analysis](#)

- [Black Students](#)
- [Hispanic Students](#)

[Subgroup Analysis](#)

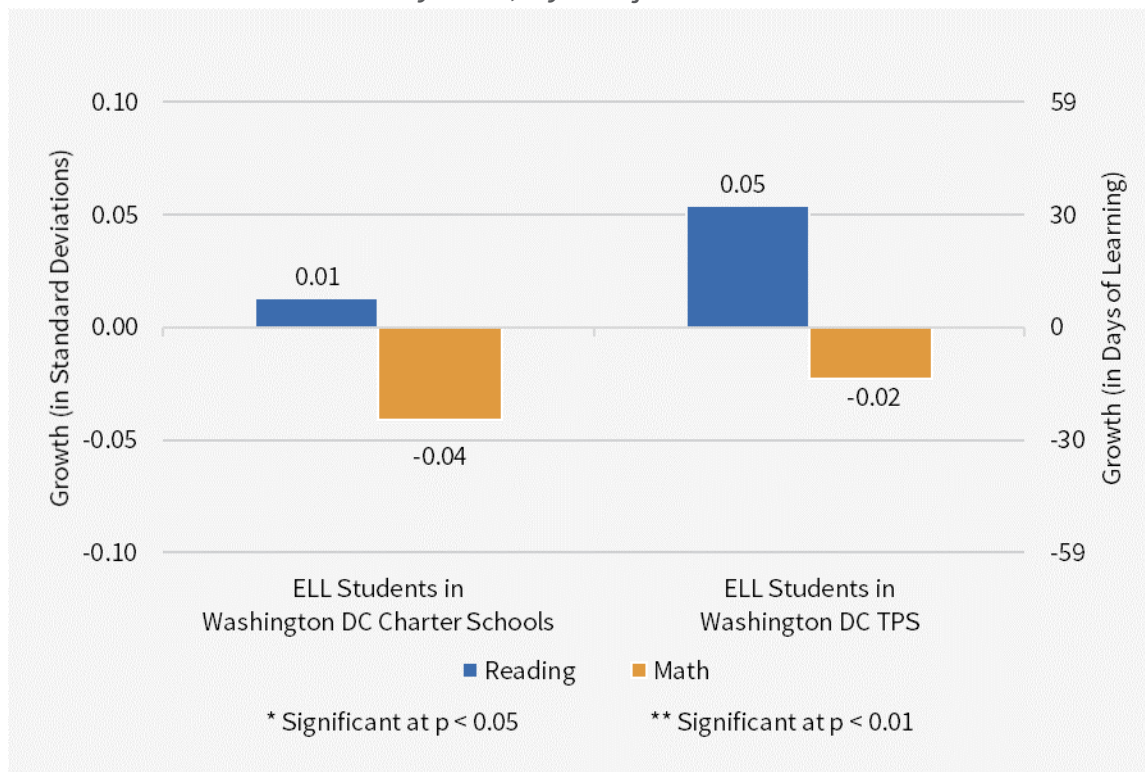
- [Poverty Status](#)
- [ELL Status](#)
- [Special Ed. Status](#)

[Gender Analysis](#)

- [Female Students](#)
- [Male Students](#)

Subgroup Analyses: English Language Learner Status by Sector

Learning Gains for ELL Students in Washington DC Charter Schools and ELL Students in Washington DC TPS Compared to the Average Learning Gains of ELL Students Citywide, by Subject



The 0.00 line represents the average learning gains of ELL students in the entire city.
These results capture one-year academic growth for the period ending in Spring 2017.

[Roadmap
for Graphs](#)

[Sector Analysis](#)

- [Charter Network](#)
- [School-Level](#)

[Race Analysis](#)

- [Black Students](#)
- [Hispanic Students](#)

[Subgroup Analysis](#)

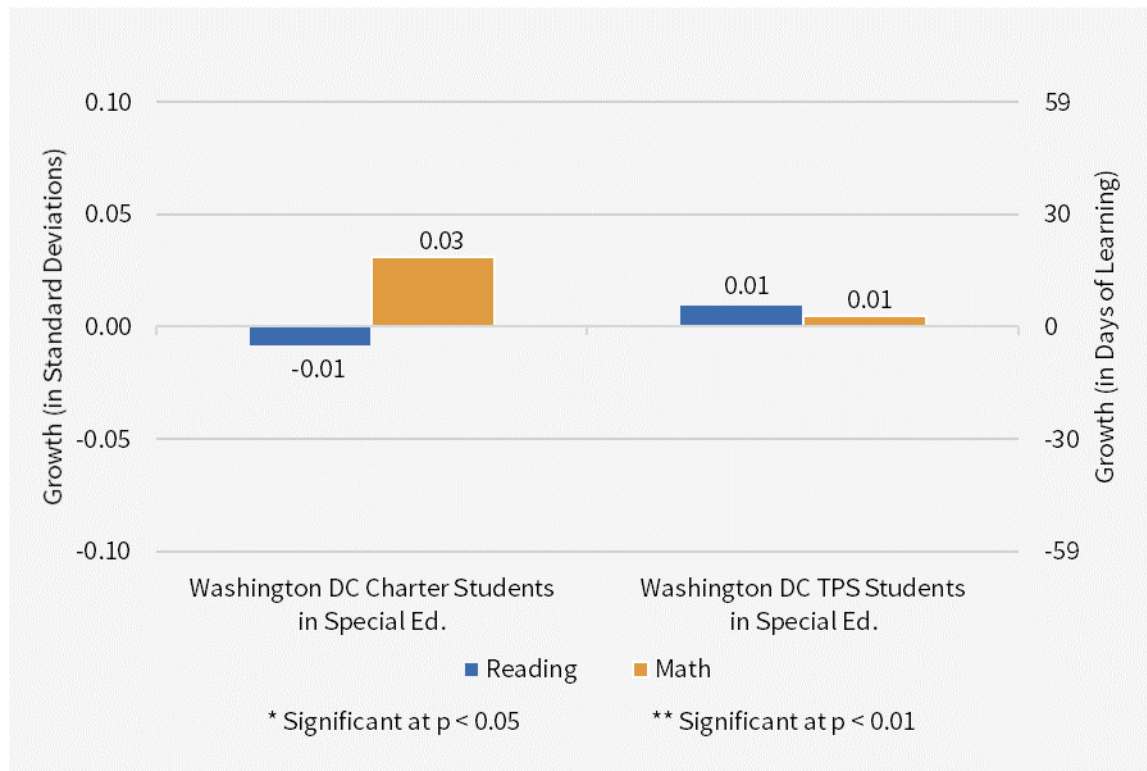
- [Poverty Status](#)
- [ELL Status](#)
- [Special Ed. Status](#)

[Gender Analysis](#)

- [Female Students](#)
- [Male Students](#)

Subgroup Analyses: Special Education Status by Sector

Learning Gains for Washington DC Charter School Students in Special Ed. and Washington DC TPS Students in Special Ed. Compared to the Average Learning Gains of Students in Special Ed. Citywide, by Subject



The 0.00 line represents the average learning gains of students in Special Ed. in the entire city. These results capture one-year academic growth for the period ending in Spring 2017.

[Roadmap
for Graphs](#)

[Sector Analysis](#)

- [Charter Network](#)
- [School-Level](#)

[Race Analysis](#)

- [Black Students](#)
- [Hispanic Students](#)

[Subgroup Analysis](#)

- [Poverty Status](#)
- [ELL Status](#)
- [Special Ed. Status](#)

[Gender Analysis](#)

- [Female Students](#)
- [Male Students](#)

Gender Analysis

Click the buttons below for graphs showing the performance of female students in Washington DC or male students in Washington DC in each sector relative to citywide average learning gains for the same gender.

[Female
Students](#)

[Male
Students](#)

[Roadmap
for Graphs](#)

[Sector Analysis](#)

- [Charter Network](#)
- [School-Level](#)

[Race Analysis](#)

- [Black Students](#)
- [Hispanic Students](#)

[Subgroup Analysis](#)

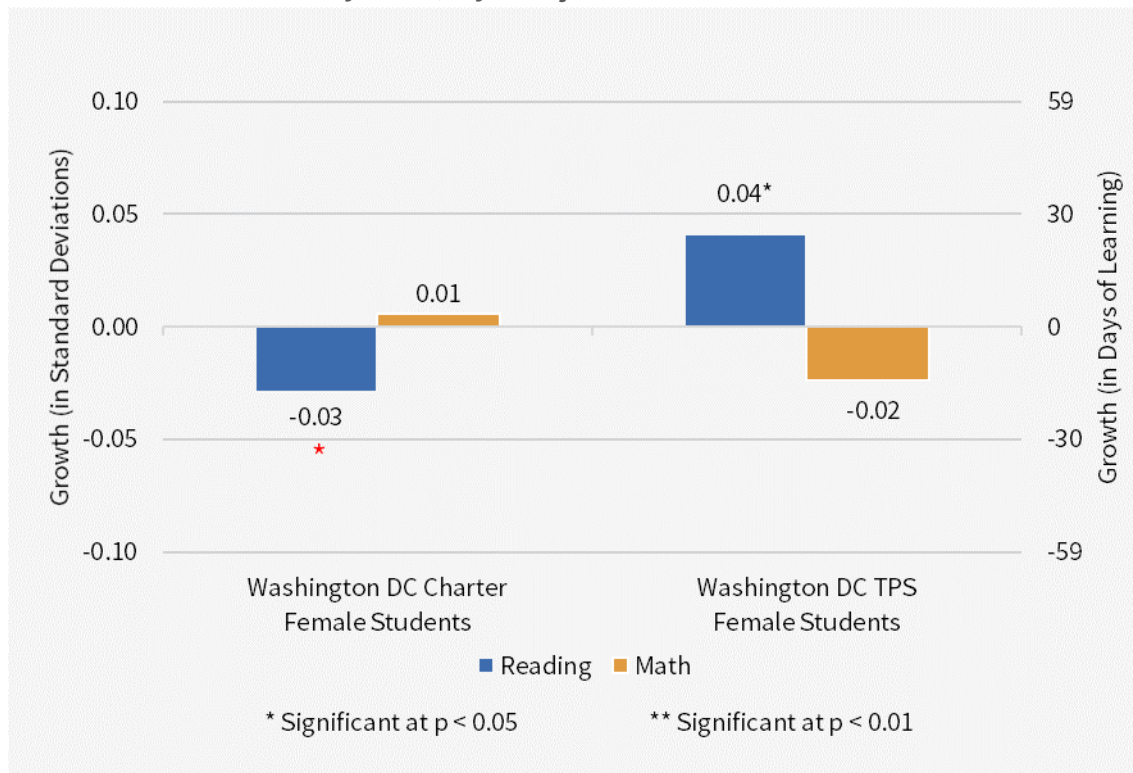
- [Poverty Status](#)
- [ELL Status](#)
- [Special Ed. Status](#)

[Gender Analysis](#)

- [Female Students](#)
- [Male Students](#)

Gender Analysis: Female Students by Sector

Learning Gains for Female Charter School Students and Female TPS Students in Washington DC Compared to the Average Learning Gains of Female Students Citywide, by Subject



* Growth significantly stronger than that of TPS

* Growth significantly weaker than that of TPS

The 0.00 line represents the average learning gains of female students in the entire city. These results capture one-year academic growth for the period ending in Spring 2017.

[Roadmap
for Graphs](#)

[Sector Analysis](#)

- [Charter Network](#)
- [School-Level](#)

[Race Analysis](#)

- [Black Students](#)
- [Hispanic Students](#)

[Subgroup Analysis](#)

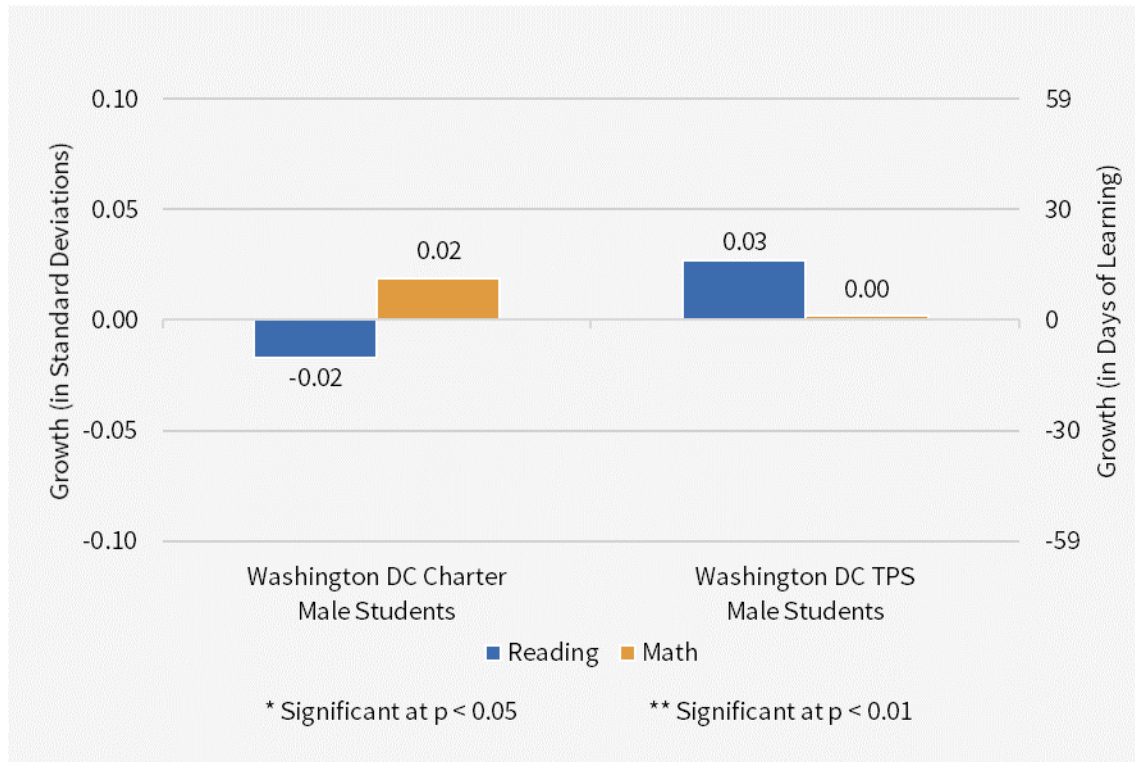
- [Poverty Status](#)
- [ELL Status](#)
- [Special Ed. Status](#)

[Gender Analysis](#)

- [Female Students](#)
- [Male Students](#)

Gender Analysis: Male Students by Sector

Learning Gains for Male Charter School Students and Male TPS Students in Washington DC compared to the Average Learning Gains of Male Students Citywide, by Subject



* Growth significantly stronger than that of TPS

* Growth significantly weaker than that of TPS

The 0.00 line represents the average learning gains of male students in the entire city. These results capture one-year academic growth for the period ending in Spring 2017.

[Roadmap
for Graphs](#)

[Sector Analysis](#)

- [Charter Network](#)
- [School-Level](#)

[Race Analysis](#)

- [Black Students](#)
- [Hispanic Students](#)

[Subgroup Analysis](#)

- [Poverty Status](#)
- [ELL Status](#)
- [Special Ed. Status](#)

[Gender Analysis](#)

- [Female Students](#)
- [Male Students](#)

Summary of Findings

The summary of the findings from the analysis of Washington DC schools is presented [here](#).